



YENNADON ELEMENTARY SCHOOL

Telephone: 604-463-8871 Fax: 604-463-0228

Principal: Mrs. L. Lawrance Vice-Principal: Ms. A. MacInnes

Website: <https://elementary.sd42.ca/yennadon>

Newsletter #7

March 29, 2023

Principal's Message

Well, it seems like only yesterday we were sending home last month's newsletter. This is the time of the year when the days seem to move in double time. March was an extremely busy month, so we hope you and your families had a wonderful Spring Break filled with some time to slow down and relax. We are already heading into the last three months of the school year. Wow! Time flies, doesn't it?

We are excited to see the weather changing for the better. Throughout the months of February and March, several classes took part in a variety of field trips and some interesting guest speakers presented information to many classes as well. Other focal points during these two months were the district basketball championships, our fist bump morning welcome, pink post-it-note positive affirmations with the RCMP on Pink Shirt Day and Jump Rope for Heart. Soon, we will begin to practice for track and field.

It is wonderful to see such dedication from our Yennadon staff and students! We're looking forward to an active and eventful April!

Mrs. L. Lawrance, Principal



Upcoming Events

Mon., Mar. 27	School reopens after Spring Break
Thurs., Mar. 30	Deadline to Order TCBY (frozen yogurt) Hot Lunch (for Apr. 5 th)
Mon., Apr. 3	2:30 pm Cross Country Training begins (complete permission on portal)
Wed., Apr. 5	9:00 am INTERMEDIATE Assembly TCBY (frozen yogurt) Hot Lunch (pre-order required) Deadline to Order Pizza Hot Lunch (for Apr. 14 th)
Fri., Apr. 7	Good Friday – No School Deadline to Order Subway Hot Lunch (for Apr. 19 th)
Sun., Apr. 9	Happy Easter!
Mon., Apr. 10	Easter Monday – No School
Apr. 12 – 24	K – 7 Schoolwide Hip Hop Sessions
Fri., Apr. 14	Pizza Hot Lunch (pre-order required)
Tues., Apr. 18	7:00 pm PAC Meeting (Library)
Wed., Apr. 19	Subway Hot Lunch (pre-order required) Deadline to Order Pizza Hot Lunch (for Apr. 28 th)
Sun., Apr. 22	Earth Day!
Tues., Apr. 25	10:35 and 12:35 Hip Hop Performances (more information to follow)
Wed., Apr. 26	Secretary's Day! Deadline to Order Pizza Hot Lunch (for May 5 th)
Fri., Apr. 28	Pizza Hot Lunch (pre-order required)
Sat., Apr. 29	Student Learning e-Survey Access Closes





Moving?

If you know you will not be attending Yennadon Elementary next year, we would appreciate it if you let us know. During the next couple of months, we will be working very hard to accommodate all of the requests to transfer to Yennadon, and it is very helpful to our planning if we know who will or will not be attending next year. Thanks for your help with this request.

Guidelines for Transferring Schools

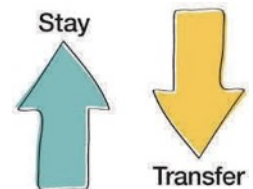
These guidelines apply to students who want to:

- Transfer to Yennadon from another school in Maple Ridge / Pitt Meadows
- Transfer out of Yennadon to another school in Maple Ridge / Pitt Meadows

Parents contemplating a transfer request are encouraged to consult with the principal before submitting a formal request. **To make a formal transfer request, log in to your [Parent Portal](#) account, click on the 'Registration' tab, and under 'New Request' select the appropriate transfer period.**

In general, acceptance criteria for prioritizing new registrations are:

- Students who live in catchment
- Students who live out of catchment with siblings already in the school
- Out of catchment without siblings
- Out of District students



At **Yennadon**, we generally can **only take students who live in our catchment**. Sometimes, we can take students who live out of catchment, but who already have siblings in our school. Given how full we are, we usually do not accept students from out of catchment if they do not have siblings in our school. As always, if you have questions, please give us a call. Please refer to the prioritization of transfer requests for more detailed information: [SD42 Procedure for Student Placement](#) and [SD42 Elementary Student Transfer Guidelines](#).

Dogs on School Grounds

This is a continuing dilemma. **Please remember to keep your dogs at the edge of the school grounds and on a leash at all times. Most important, please remember to pick up after your dog. Sometimes we are left with quite a mess on our field. Many adults and children are either allergic to dogs or uncomfortable when dogs are present.** Let's work together to ensure the safety and comfort of all the adults and children on our school grounds throughout the day, especially before and after school. Your cooperation is very much appreciated.



Yennadon Elementary is on Twitter!

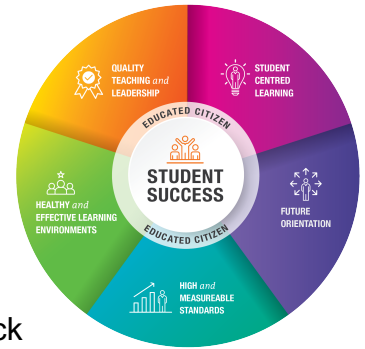
For quick reminders and updates, follow us on Twitter @YennadonSD42.

For schoolwide information and events, check our school website at

<https://elementary.sd42.ca/yennadon/> .

Ministry of Education Student Learning Surveys

If you have a student in Grade 4 or 7, we sent home a portal message outlining this year's Student Learning Survey for parents. This year, we must complete all surveys online, so we would ask you to please take 15 minutes of your time to fill this out. To complete the survey, go to www.bced.gov.bc.ca/sat_survey/access.htm and in the **Parents** section under **Direct Access – 'no logon number required'** select our **District**, Maple Ridge-Pitt Meadows, select our **School**, Yennadon, and select your **Language** of choice, then click **Log On**. If, at any time, you have questions please do not hesitate to call us. The more parents who complete these surveys, the higher quality of feedback we will receive. Your input is appreciated! **All surveys must be completed online by April 29th**. As well as completing this survey, please feel free to contact us anytime with questions or feedback.



Peanut Allergies



We would once again like to remind you that we have some students at Yennadon who are allergic to foods containing nuts or nut products. Ideally, we ask that you not send food to school containing these ingredients. Realistically, we know this is not always possible or convenient, so we do ask you to remind the teacher if your child has food containing nut products. We will often ask students to eat in an alternate place and will ask them to wash their hands well after eating, to help minimize the risk of nut oils being spread around the school. Your help with these requests is appreciated as we continue to try and keep Yennadon Elementary as safe as possible for all students.

Class Placement for 2023/2024

It is **not yet time** for parents who would like to submit input regarding class placement – **this is done in our April newsletter**, and forms will be available on our school website. It is appropriate, however, to put some advance reminders in this newsletter. Here are some things to remember as we begin to think about creating our classes for next year.

Please be assured that staff devote considerable time, care and attention to this process. This very complex and lengthy responsibility occurs over several weeks and continues into September when class placements are finalized.

Throughout the year, there have been many opportunities for parents and teachers to discuss each child. Staff work together to consider the following criteria very carefully: **social emotional skills and relationships, as well as learning styles, strengths and needs**. Our goal is to create safe and engaging inclusive classrooms that balance these factors, as equitably as possible.



Finally, input must refrain from requesting specific teachers or peers by name. **We will remind you in the April newsletter that these forms are available on our website or at the Office.**

K-7 Hip Hop Dance Program – Please Submit Payment

We are excited to announce that this spring students of Yennadon have an opportunity to participate in a schoolwide Hip Hop Dance Program which runs for two weeks during school hours. It begins on April 12th and final performances occur on April 25th. A choreographed routine is taught to each grade throughout the program. **At the end of this dance program, each group has a chance to perform their routine in the school gym at an assembly.** As we have over 700 students in the school, the performances are divided into two separate shows. The first group performs after recess and the second group performs after lunch. **Parents are invited to attend the show and watch their children perform. More information regarding which classes are performing after recess/lunch to follow.**



We are happy to welcome Jhaymee Hizon as our dance instructor for this program. Jhaymee has worked in the Lower Mainland as a professional dancer and instructor for over 20 years. Cost of this two week program is \$15.00 per child. The PAC is covering a portion of the cost by contributing \$5.00 per student. **The remaining amount owing from parents is \$10.00 per child. Please submit payment through the Parent Portal fee form by April 21st.**

If you have any questions regarding this hip hop program, please do not hesitate to contact the PAC.

The Benefits of Play for Children's Intellectual Development

Play contributes to children's learning and development in many ways. Play contributes to healthy cognitive growth, the development of imagination and creative thinking, logical reasoning and problem-solving skills, and memory.

- In dramatic play, children learn to use objects and actions symbolically, which is essential for language, literacy, and numeracy.
- Play and language both involve symbolic representation: language uses words to represent objects, actions, and situations, and in play children use language and objects to represent other things, such as a cardboard box for a tent. Socio-dramatic play fosters children's language development by nudging them to make intentional use of talk to identify and elaborate on play themes.
- Play lays a foundation for future success in writing, reading, and developing abstract scientific and mathematical concepts.



Recent research documents the many benefits of a play-based environment and it has even been shown that these benefits can create success throughout life. Reading with and to your child, along with counting objects and talking about your child's interests, are important aspects of their development.

Welcome Spring and to our Final Term – Let's Start Strong!

We want to see your child every day! As we resume with term 3, we would like to remind all parents/caregivers of the role that good attendance plays in the success and well-being of students. Each day a student is absent is a lost opportunity for learning and connecting. The purpose of this message is to provide information to parents to help improve student attendance and, consequently, student achievement.



Absenteeism

With a loss of instructional time due to frequent absences and as each day of learning builds on the previous day there are conceptual and content gaps. Over the course of a student's elementary schooling, missing 10 percent of school days equates to missing almost an entire month of school. In the early primary years, when children are beginning to learn to read, missing a day or two each month can cause reading difficulties.

Lates, Appointments, and Vacations

We encourage students to be on time. School starts at 8:30 am with teacher-student check ins, an overview of the day, attendance, and announcements, all of which creates an important sense of orientation, expectation, builds positive connections and relationships, and supports students' sense of belonging. Teachers take attendance at the beginning of class and register absences and lates digitally. For the main building, it is important that late students first check in at the office before coming to class so attendance can be updated as soon as possible. For the Annex and portables, it is important that parents call the school office to let us know that your child has arrived late.

We recognize there are times that parents need to make appointments for their child which require students to leave school early. In these cases, please notify the office and teacher in advance and plan to pick up your child with the least classroom disruption. This includes picking up your child from the office/front of the school with ample time for your child to gather their things and receive important notices. Additional responsibility should not be placed on the teacher to recall and manage various pick-up times and arrangements.

Teachers are not responsible for providing vacation homework packages. In addition, students' ability to demonstrate learning outcomes fully and fairly through vacation packages are impeded by students not receiving and participating in the usual in-class instructions and discussions. In-class lessons and conversations nurture and reinforce student understanding and confidence and provide the opportunity for students to ask clarifying questions, which helps teachers determine and support students' comprehension.

What families can do?

Try to send the message that every day of school is important. Attending school regularly ultimately helps children feel better about school and themselves. Regular attendance develops good habits that will help children do well in elementary, secondary, and post-secondary school, and throughout their adult lives and future careers.

- Try to avoid scheduling vacations when school is in session.

- Try to schedule dental or medical appointments before or after school hours.
- Build regular routines and prepare for school mornings the night before.
- Monitor your child's use of technology as children are often unable to do so on their own.
- Help your child get a good night's sleep. Most younger children need 10-12 hours of sleep per night and adolescents (13-18 years of age) need 8-10 hours.


We recognize and understand there are many reasons why your child may be late or absent to school. Please remember to use the Parent Portal to log the absence or send a note or call the school office in advance if you know your child will be away.

We hope this information provides clarity, encourages the value of regular school attendance, and provides helpful information for families. Thank you for your ongoing support.

Family Education Centre

The Family Education & Support Centre has been supporting families in our community for over 40 years. Please visit their website at www.familyed.bc.ca to find out more about the services they offer.





ANGER MONSTERS

This children's program is designed to teach children 8-12 yrs old what anger is.

This program is designed to allow participants to be able to identify their triggers and learn tools to help control their anger.

The parents program features skills from Neufeld Institute, including various anger cycles and goals of behavior. Participants will also learn how to help support their child's efforts to tame their anger, along with different calming techniques.

Date: May 27- June 17 (Sat)
Time: 330-530pm
Cost: \$90
***price for 1 parent and 1 child**



CHILDREN'S PROGRAMMING

SCHOOL'S COOL

We are offering an eight week kindergarten readiness program for children entering school September 2022. Priority will be given to children who have not attended preschool.

Date: **April 5 to June 21 (Tues/Wed)**
Time: **12:30 to 4:30pm**
Cost: **FREE**



UNITED WAY - SCHOOL'S OUT PROGRAM

Resiliency through Recreation

This program will focus on fun activities around the different elements of resiliency such as optimism, competency, emotional development and relationships. Students Kindergarten to Gr 7 are welcome and we have mentors on site to help with any additional needs.

Time: **2:20-4 pm**
Cost: **FREE**

Pitt Meadows Elementary
Date: **April 11- May 30(Tues)**

Golden Ears Elementary
Date: **April 12- May 31 (Wed)**

Eric Langton Elementary
Date: **April 13- June 1 (Thurs)**



United Way
British Columbia

Working with communities in BC's
Interior, Lower Mainland, Central
& Northern Vancouver Island



HOME ALONE

THIS TWO-HOUR ZOOM COURSE IS AN OPPORTUNITY FOR PARENTS/CAREGIVERS WHO WANT TO PREPARE THEIR 9-YEAR-OLD CHILD FOR STAYING AT HOME ALONE WHEN THEY TURN 10 YEARS OLD AND ARE LEGALLY ALLOWED TO DO SO. TOPICS COVERED INCLUDE: DEALING WITH EMERGENCIES, ANSWERING THE DOOR, SNACKS/COOKING AND GAUGING YOUR CHILD'S READINESS TO BE HOME ALONE. OUR EVENING WORKSHOPS ARE OPEN TO ALL FAMILIES IN MAPLE RIDGE AND PITT MEADOWS.

Dates:

- April 11
- May 23
- June 20

Time: 6-8m

Place: Zoom



To register, please call 604-467-6055 or email
(reg@familyed.ca) our office, or visit our website
familyed.bc.ca