



YENNADON ELEMENTARY SCHOOL

Telephone: 604-463-8871 Fax: 604-463-0228

Principal: Mrs. L. Lawrance Vice-Principal: Mrs. J. Walker

Website: <https://elementary.sd42.ca/yennadon>

Newsletter #5

January 22, 2021

Principal's Message

Welcome back! We hope all Yennadon families had a great Christmas break and on behalf of the staff we would like to wish everyone a very happy and safe New Year! We are looking forward to our second half of the school year.

Many thanks go out to our staff for their hard work and effort within our school everyday. Staff members are continually giving of themselves by helping and supporting each other and your children. Yennadon is a truly wonderful community!

Mrs. L. Lawrance, Principal



Upcoming Events

Jan. 11 – Mar. 25	Grade 4 & 7 Middle Years Development Instrument Timeframe
February 3 – 10	Kindergarten General Registration (Parent Portal)
Wed., Feb. 3	Global School Play Day! 9:00 am Monthly Assembly (in school Zoom) 7:00 pm PAC Meeting (via Zoom)
Thurs., Feb. 4	Grade 8 Registration District-Wide (Parent Portal)
February 4 – 19	Grade 4 & 7 Foundation Skills Assessment Timeframe
Feb. 15 – Mar. 12	Family Day Holiday – School Closed
Mon., Feb. 15	School Based Non-Instructional Day (no school for students)
Tues., Feb. 16	Jump Rope for Heart – <i>tentative</i>
Fri., Feb. 19	Pink Shirt Day!
Wed., Feb. 24	Kindergarten Late Registration begins (Parent Portal)



Pink Shirt Day - February 24, 2021



Kindergarten Registration for 2021-2022

School District #42 is again using “online only” registration system through the Parent Portal for Kindergarten 2021-22. The timelines for registration at Yennadon are as follows:

Sibling: January 6 – 12, 2021

Choice: January 20 – 25, 2021

General: February 3 – 10, 2021

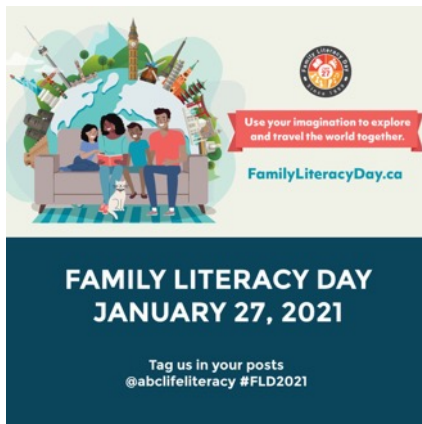
Late: February 24 – July 31, 2021

Open: August 19 and on



All registration phases open at 12:00 noon online. Any child who turns 5 years old in 2021 (born in 2016) is eligible to register for the 2021/22 school year.

All Kindergarten Registrations require a “Portal” account! After registering online, parents will receive an email from SD42 telling them that their application has been received. Once SD42 has assigned students to their specific schools, parents will receive a second email asking them to upload their supporting documents to the Parent Portal. This email will have a specific window for supporting documents to be received by the school. ***Please note that if documentation is not received by the given date, the child will be unassigned to any school.***



Family Literacy Day – Wednesday, January 27th

Family Literacy Day takes place every January 27th to raise awareness about the importance of reading and engaging in other literacy-related activities as a family. Since 1999, thousands of schools, libraries, literacy organizations and other community groups have taken part in the initiative. ABC (www.abclifeliteracy.ca) creates free learning and promotional resources for anyone that wants to get involved. Taking time every day to read or do a learning activity with children is crucial to a child’s development, improving a child’s literacy skills dramatically, and can help a parent improve their skills as well.

Family Literacy Day 2021 Theme: Travel the World Together!

Use your imagination to go exploring and travel the world together as a family – you never know what you’ll learn! Plan your dream trip, learn about another culture and open your mind to the world.

Grade 8 Registration for 2021-2022

There are no Grade 7 Information Nights prior to registration. Each high school will host an information session for incoming students once registration is complete.

To provide an optimal learning environment for all students, the Maple Ridge – Pitt Meadows School District must manage enrolment across all schools, ensuring that enrolment numbers match building capacity. Due to increasing enrolment in recent years, the majority of students are assigned to their catchment school. All our high schools meet the needs of all learners.

Important Registration Dates:

- **Online registration opens Thurs., February 4th** at 12:00 noon (you must have a Parent Portal account)
- **Online registration closes Fri., February 19th** at 12:00 noon (on the Parent Portal)
- Families will be notified of placement before Spring Break

Upcoming Specialized Information Sessions:

January 28 at 7:00 pm – Gr. 7 Parent Evening sponsored by DPAC; the event will be carried live on YouTube: <https://bit.ly/3hXdb2h>

February 2 at 7:00 pm – Learning Services Parent Information Night (for parents of students with support needs); preregistration required: <https://bit.ly/2MEpJA0>

Transfer Dates:

March 1 (approximately) – Families advised of school placements

March 5 – Transfer requests due; transfers will be considered by catchment, sibling, and other circumstances (all by lottery); the transfer form is completed at the assigned high school

May – Review of all transfer requests

*Download Grade 8 registration information in PDF format: [Grade 8 Registration.pdf](#)

*Download the Grade 7 to 8 registration and transition fact sheet in PDF format: [Grade 7 to Grade 8 Registration and Transition.pdf](#)

*See the district website for more information <http://www.sd42.ca/student-registration/>

Grade 7s Visit to the High Schools:

Wed., May 26 for most of the school day – *tentative*



Report Cards and Three Way Conferences

Our next **Early Dismissal for conferences is Thursday, March 4th at 11:30 am** and our **Three Way Conferences are on Friday, March 5th**. Please mark your calendars. Given the provincial health guidelines for educational settings, our Term 2 reporting conferences will be virtual again with the teacher, the parent(s)/guardian(s), and the student. The conference will occur **over Zoom** and will be a bit shorter than usual (10–15 min. instead of the usual 20–30 min.).



Yennadon Cyberschool

There will be a Zoom information meeting on **Tuesday, March 9th, at 6:30 p.m.** for parents/guardians of current Grade 5 and 6 students interested in placing their child in the (2021-2022) **Yennadon Cyberschool program**. This year, **the meeting will be virtual**; a Zoom link will be sent out through the Parent Portal. This meeting is for parents who are unfamiliar with the Cyberschool model. **Online registration begins on Wednesday, March 10th, at 7:00 pm.** The registration link will be sent out through the Parent Portal. A link to the registration site will also be available on the school website shortly after 7pm, if you have an issue with the portal. There will be a limited number of spots available for new Cyberstudents. **All registrations are date and time stamped and are looked at in the order they are received.** Within a week you will receive notification on the portal that your registration has been received. Further information about acceptance to the program will come out in June 2021. We look forward to meeting with you virtually on Tues., March 9th!

Outdoor Days

We try to get our students outside on a regular basis throughout the year. Staff and parents feel this is a healthy choice for students, and the simple fact is that many students prefer to be outside during recess and lunch. For this reason, please help your children learn to dress appropriately to be outside during our Lower Mainland Winter / Spring weather. Some of you are sending extra socks and pants, which has proven to be a helpful thing for your children. As well, please remind your child(ren) that our fields can get quite slippery and muddy during rainy times. We are reminding students that, if they get too dirty outside, they can be quite uncomfortable in class for the rest of the day. As their clothes dry, the dirt drops to the floor, which can also create a higher risk of slipping or losing control while running in the gym.



Moving?

If you know you will not be attending Yennadon Elementary next year, we would appreciate it if you let us know. During the next couple of months, we will be working very hard to accommodate all of the requests to transfer to Yennadon, and it is very helpful to our planning if we know who will or will not be attending next year. Thanks for your help with this request.



School Closures



On rare occasions schools may be cancelled due to extreme weather conditions. Public announcements affecting closure of schools will be made by the Superintendent of Schools. For the purpose of announcing emergency closures prior to the opening of schools, the radio stations listed below will be contacted by the district office. The announcements will be made between 6:15 and 7:00 a.m.

News 1130 AM CKNW - 980 AM CBC - 690 AM Global TV news

As well, you can check the school district website (www.sd42.ca) and district social media feeds for updates: **SD42 Twitter feed** [@sd42news](https://twitter.com/sd42news) and **SD42 Facebook feed**

When schools are closed, we cannot make calls home to let you know; nor, can we answer all the phone calls to ask if school is open.



Drop Off and Pick Up Reminder

We are seeing some instances of parents parking in our fire lane and leaving their vehicles unattended while they come into the school. This is a violation of the fire code and is viewed quite seriously by the Fire Department. One of the reasons our round-about entrance has remained open to cars in the morning for drop off and at the end of the day for pick up is our assurance that **cars will not be left unattended in the fire lane at any time during the day**. We ask for your cooperation in following this request in the morning and after school.

Guidelines for Transferring Schools

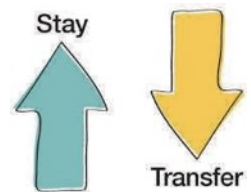
These guidelines apply to students who want to:

- Transfer to Yennadon from another school in Maple Ridge / Pitt Meadows
- Transfer out of Yennadon to another school in Maple Ridge / Pitt Meadows

Parents need to go to their current school to request a **student transfer form**. The current school will keep this form. There will be a series of three meetings to decide on transfer requests in the months of April, June, and August. Once decisions have been made at these meetings, parents will be phoned to let them know. Families who move into a school catchment need to go to that school to register. If they are hoping to attend a different school, they can indicate this on their registration form.

In general, acceptance criteria for prioritizing new registrations are:

- Students who live in catchment
- Students who live out of catchment with siblings already in the school
- Out of catchment without siblings
- Out of District with siblings
- Out of District without siblings



At Yennadon, we generally can **only take students who live in our catchment**. Sometimes, we can take students who live out of catchment, but who already have siblings in our school. Given how full we are, we usually do not accept students from out of catchment if they do not have siblings in our school. As always, if you have questions, please give us a call!

Please refer to the Student Transfer Guidelines for more detailed information:

https://www.sd42.ca/assets/media/Elementary-Transfer-Guidelines-2021_22-web.pdf

Ministry of Education Student Learning Surveys

MESSAGE TO PARENTS OF GRADE 4 AND 7 STUDENTS

This year, parents do not need a Logon code to access the online Student Learning Survey.

Electronic surveying is available until April 30, 2021. The website to access the electronic survey is:

http://www.bced.gov.bc.ca/sat_survey/access.htm

We request you to please take 15 minutes of your time to fill this out. If, at any time, you have questions please do not hesitate to call us.

The more parents who complete these surveys, the higher quality of feedback we will receive. Your input is appreciated! As well as completing this survey, please feel free to come and see us anytime with questions or feedback!



Wheelhouse Online Information Night

Tuesday, January 26, 2021 (6:00 pm)

Preregistration required: <https://bit.ly/3hvXYoJ>

The Wheelhouse is a classroom where students are both challenged and supported in becoming life-long learners and responsible citizens. Some of the highlights of the program include:

- Weekly Field Study Days where students learn outside the regular class setting;
- A classroom of care and discovery that is well supported by staff, parents and community mentors;
- Leadership activities that improve confidence, citizenship, and social responsibility;
- Wheelhouse students are also part of the school district 1-to-1 program, where each student is assigned an iPad for use throughout the school year.

The Wheelhouse program is open to all Maple Ridge – Pitt Meadows School District students who will be going into grades 6 and 7 in September 2021.

REGISTRATION for The Wheelhouse opens online at **noon, February 10, 2021**. Registration link: <https://letstalksd42.ca/sd42-wheelhouse-2021-2022>

The program runs out of Alouette Elementary, 22155 Isaac Crescent, Maple Ridge. For more information, including a more in-depth look at the program, dates and times for student interviews, and details on how to become a Wheelhouse student, please visit The Wheelhouse online at <https://wheelhouse.sd42.ca/>.

Late French Immersion Online Information Night

Wednesday, February 3, 2021 (7:00 p.m.)

Preregistration required:

https://sd42.zoom.us/join/u5UqfuCqgjsvE9NcrXDmi_L-HMmuKoST9J17

The SD42 Late French Immersion Program is an excellent opportunity for students who want to learn a second language or are looking for a challenge. Students who are currently in Grade 5 are eligible to begin Late French Immersion in September 2021 at Golden Ears Elementary. This two-year elementary program continues at Maple Ridge Secondary School.

To learn more about Late French Immersion, participate in our online information meeting on February 3, 2021.

For more information about our French Immersion programs, please contact Shelley Linton at 604.463.7108 or shelley_linton@sd42.ca

REGISTRATION for Late French Immersion opens online at noon, February 10, 2021.

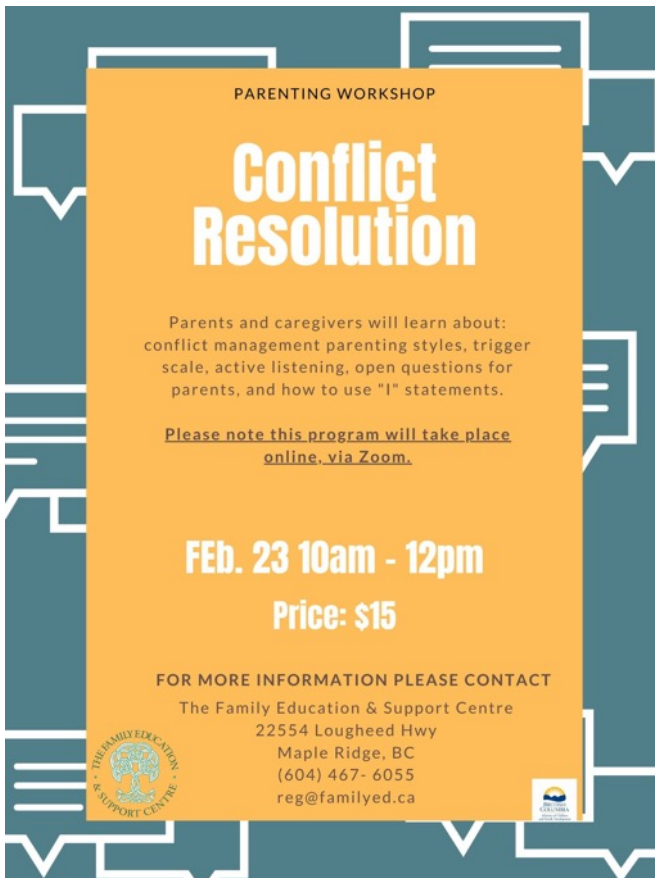
Registration link: <https://letstalksd42.ca/sd42-late-french-immersion-2021-22>

The Late French Immersion Program runs out of Golden Ears Elementary school, 23124 – 118 Avenue, Maple Ridge



Family Education Centre

The Family Education & Support Centre has been supporting families in our community for over 40 years. Please visit their website at www.familyed.bc.ca to find out more about the services they offer.



PARENTING WORKSHOP

Conflict Resolution


Parents and caregivers will learn about: conflict management parenting styles, trigger scale, active listening, open questions for parents, and how to use "I" statements.

Please note this program will take place online, via Zoom.

FEB. 23 10am - 12pm

Price: \$15

FOR MORE INFORMATION PLEASE CONTACT
The Family Education & Support Centre
22554 Lougheed Hwy
Maple Ridge, BC
(604) 467-6055
reg@familyed.ca



UNITED WAY SCHOOL'S OUT SPRING BREAK PROGRAM

UNITED WAY & THE FAMILY EDUCATION & SUPPORT CENTRE ARE PROUD AND EXCITED TO BE ABLE TO PROVIDE THIS PROGRAM FOR OUR COMMUNITY. THE PROGRAM WILL CONSIST OF ACTIVITIES SURROUNDING EMPATHY, OPTIMISM, RESILIENCY, GRATITUDE, CONFLICT RESOLUTION AND LEARNING ABOUT DIFFERENT CULTURES AND COUNTRIES.

MARCH 15-18TH (K-7)
12PM-4PM

OR

MARCH 22ND-25TH (K-7)
12PM-4PM

TO REGISTER PLEASE CONTACT OLIVIA OR GRACE AT
REG@FAMILYED.CA OR CALL 604-467-6055



I AM Awesome!

SPRING CAMP

Designed to help young individuals with communication styles, triggers, looking at their special inner qualities, how to deal with stress and how to be a friend!

**MONDAY-THURSDAY
8AM-12PM**

**MARCH 15TH - 18TH
FOR 6-8YRS**

**MARCH 22ND TO 25TH
FOR 9-10YRS**

PRICE: \$86

FOR MORE INFORMATION, PLEASE CONTACT
THE FAMILY EDUCATION & SUPPORT CENTRE
22554 LOUGHEED HWY
604-467-6055
reg@familyed.ca



Online Zoom Classes for Parents and Students

Maple Ridge – Pitt Meadows School District No. 42 is offering evening online Zoom courses this year for both parents and students. Class materials will be emailed to you before the session, so please print the materials or have them available on another device during the class. Pre-registration is limited to one parent/caregiver as spaces are limited, however more than one parent/caregiver may participate in the Zoom meeting. A 24-hour cancellation notice is required for a refund.

CONFLICT RESOLUTION FOR PARENTS

Learn how to use 'I' statements, conflict management parenting styles, trigger scale, active listening, paraphrasing, and open questions for parenting.

Tuesday, March 9 (6 to 8 p.m.)

Tuesday, June 8 (6 to 8 p.m.)

Registration Fee: \$15

To register: <http://schooldistrict42.perfectmind.com>. For more information, please contact Drea Owen, program manager, at 604.346.9815 or drea_owen@sd42.ca.

PARENTING RESILIENT CHILDREN

Understand better what resiliency is and how we can foster it in our families.

Tuesday, February 16 (6 to 8 p.m.)

Tuesday, May 4 (6 to 8 p.m.)

Registration Fee: \$15

To register: <http://schooldistrict42.perfectmind.com> For more information, please contact Drea Owen, program manager, at 604.346.9815 or drea_owen@sd42.ca.

HOME ALONE (PARENT/CAREGIVER PARTICIPATION IS MANDATORY)

This two-hour course is an opportunity for parents/caregivers who want to prepare their nine-year-old child for staying at home alone when they turn 10 years old and are legally allowed to do so. Topics covered include: dealing with emergencies, answering the door, snacks/cooking, and gauging your child's readiness to be home alone. Our evening workshops are open to all families in Maple Ridge and Pitt Meadows.

Tuesday, January 19 (6 to 8 p.m.)

Tuesday, April 13 (6 to 8 p.m.)

Registration Fee: \$25

To register: <http://schooldistrict42.perfectmind.com>. For more information, please contact Drea Owen, program manager, at 604.346.9815 or drea_owen@sd42.ca.

DANCE PARTY JUNIORS (GRADES 1-3)

Join us for this fun and upbeat virtual dance class that will get your kids moving and burning off energy. No materials required, just a small space to dance in and comfortable clothes you can move in.

Tuesdays, 3:30 to 4 p.m., Jan. 19 to Feb. 9 (#22651)

Tuesdays, 3:30 to 4 p.m., Feb. 16 to Mar. 9 (#22656)

Registration Fee: \$32/4

To register call Maple Ridge Parks and Leisure at 604.467.7422 or go online at www.mapleridge.ca/1484. For more information call Lori at 604.476.2792.

DANCE PARTY SENIORS (GRADES 4-7)

In this virtual class for older children, students will become more expressive with their dance moves as they learn different skills and techniques. No materials required, just a small space to dance in and comfortable clothes you can move in.

Tuesdays, 4:10 to 4:40 p.m., Jan. 19 to Feb. 9 (#22655)

Tuesdays, 4:10 to 4:40 p.m., Feb 16 to Mar 9 (#22658)

Registration Fee: \$32/4

To register call Maple Ridge Parks and Leisure at 604.467.7422 or go online at www.mapleridge.ca/1484 For more call Lori at 604.476.2792.

PITT MEADOWS SHOTOKAN KARATE ONLINE

Pitt Meadows Shotokan Karate is offering online classes through Zoom. Shotokan is designed to teach self-defense, build self-confidence, stimulate a sense of well-being and provide a greater sense of self-awareness when faced with difficult situations. The primary goal of this program is to teach respect for one's self and others, as well as basic self-defense techniques. This program is taught in French, English and Japanese, giving students the opportunity to develop basic language skills.

Mondays and Wednesdays, 5:30 to 6:30 p.m.

Registration Fee: \$70/month

To register call Amy Shaw at 604.314.5852 or theninjalady@gmail.com.

**Zoom class technical requirements: 2.5mbps internet download speed; a device that is HD video-capable, such as a smartphone (Android or iOS), tablet, laptop or computer; speakers and a microphone (built-in or USB plug-in or wireless Bluetooth). Optional: a webcam – built-in or USB plug-in.*