

WELCOME TO PMSS!

We have included
some helpful info
you may need!



Student Accounts:

This info will help you access the Office 365 Suite which contains many apps including: Outlook (email), Teams, Word, and PowerPoint.

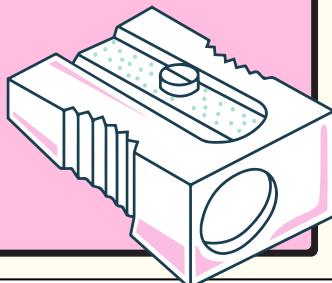
To Access: open browser and type me.sd42.ca & login using...

USERNAME: your student number
@mrpm.sd42.ca
Ex: 12345@mrpm.sd42.ca

PASSWORD: Could be your initials and birth date, for example
John Smith born December 16th 2003
would have the password:
js2003.12.16

Or it could be Pms@sd42
or perhaps you changed it to something else. If it doesn't work, please check with your teacher librarian to reset or update your password.

Your email address is:
student#@me.sd42.ca
ex: 12345@me.sd42.ca



My Class

After you have accessed your SD42 email you will notice an email (or perhaps several) from MyClass in your inbox. One of those emails should have a temporary password to the MyClass site. Go to <https://myedbc.sd42.ca/MyClass> to learn more about how to log into MyClass and use that temporary password.

My School Day App

Download the app and subscribe to the Link Crew 2021/2022
<https://myschoolday.app/download>

Wifi Instructions

Depending on what type of phone you have: iPhone/Android your login registration certificate download will look different. The basic process is: Go to your settings and make sure you are connected to "Registration" Then go to your web browser and type in "**wifi.sd42.ca**" it will prompt you to login with your username and password.

Username: your student number

Password: Whatever your password is
After this point the download process will be different for iPhone and Androids. Go to the following link:

<https://www.sd42.ca/helpdesk/internet/wireless-network/>

For further info!