

Friday Blast

Maple Ridge Elementary

Friday, December 17th, 2021



HAPPY HOLIDAYS

On behalf of everyone at Maple Ridge Elementary, we wish all of our families a safe and happy winter break! We hope this time is spent making memories with family and friends. We look forward to seeing everyone in the new year and to learning together in 2022.

REMINDER: AMMENDED SCHOOL CALENDAR

As we embark on winter break, we want to remind everyone of the amendment which was made to the 2021/2022 school calendar. The return date after the winter break is **January 3rd, 2022**. We are one of a small number of school districts returning from winter break on January 3rd rather than January 4th so that we can meet the minimum required annual minutes of instruction.

COINS FOR KIDS

Wow MRE! We raised \$132 in coins for the Christmas Hamper Society. This money will be used to buy presents for kids and help brighten their Christmas. Thank you to all who donated to this important cause.



WESTVIEW CHRISTMAS CONCERT

Westview Secondary Presents the Westview Winter Concert on January 19, 2022 at 7:00 pm! The concert will take place in the Multi-Purpose Room. Performances will be Jazz 9-12, Beginner Band 5-7 and Advanced Band 6-7. Admission will be by donation. Please see flyer attached below for details.

INTERNATIONAL TRAVEL INFORMATION

Please see below the attached guidelines for international travel and unvaccinated students. This document provides clarification of what your unvaccinated child can and cannot do upon returning from an international trip. Thank you for taking a moment to review this information.

DAILY HEALTH CHECK

We appreciate your diligence in completing the daily health check on your children before school each day. Please note, the daily health check will remain in effect in January. Thank you for keeping our school healthy and safe.



UFV SCIENCE FAIR

Attention all Science enthusiasts – The Science Fair is back! The Fraser Valley Regional Science Fair is an exciting opportunity for students in Grades K-12 to explore their curiosity and participate in an exciting, scientific experience at the UFV campus this spring. For more details, please see the attached flyer below!

HOT LUNCHES

Hot lunch dates will be added to munchalunch.com for the months of January and February. Please sign up for an account on munchalunch.com to place an order in the new year.

GRADE 8 REGISTRATION

Is your child going to High School next year? Please see below for registration information and transfer timeline.

GRADE 8 REGISTRATION PROCEDURES

ONLINE REGISTRATION



The Grade 8 Transfer Period opens at **12:00 noon on Thursday, February 3, 2022**. All Grade 8 transfers/new to district registrations are done through the *Parent Portal*. If you are new to the school district, you will need to create a *Parent Portal* account before registering.

1 IN-DISTRICT STUDENTS

Families with children currently enrolled in a Maple Ridge – Pitt Meadows School District (SD42) elementary school should submit an *Existing Student Transfer Request* in the Grade 8 Transfer Period.

OUT OF DISTRICT STUDENTS

Families with children currently enrolled in an elementary school outside of the Maple Ridge – Pitt Meadows School District (SD42) should submit a *New Student Registration* in the Grade 8 Transfer Period.

2 DETERMINING CATCHMENT SCHOOL



The registration form will automatically populate with your child's secondary catchment school based on the residential address on file with your child's elementary school.

You can also find your child's secondary catchment school using the school locator tool at <http://www.sd42.ca/school-locator/>.



New development areas may not show accurate results. Please confirm with your child's elementary school if necessary.



If the address you register on the portal does not match what is on file, proof of change of address will be required. Rental agreements are not accepted as proof of address.

ACCEPTANCE CRITERIA

The size of the school facility may limit the number of out-of-catchment registrations that can be accommodated. The school district will accommodate **catchment registrations first**, then attempt to accommodate **sibling out-of-catchment registrations**. Sibling placement cannot be guaranteed, however. Our acceptance criteria are as follows:

3

1. *In-catchment area students who, in the previous year, attended the school;*
2. *In-catchment area students who, in the previous year, were placed by the district in a different school due to a lack of space*
3. *Siblings of in-catchment area students (grades 8 to 11);*
4. *New in-catchment area students;*
5. *Siblings of out-of-catchment area students enrolled in the school (grades 8 to 11);*
6. *Out-of-catchment area students currently attending an SD42 school;*
7. *Out-of-district students currently attending an SD42 school;*
8. *Students not currently attending an SD42 school but residing in Maple Ridge or Pitt Meadows;*
9. *Out-of-district non-resident students.*

ONLINE REGISTRATION DEADLINE

4



Deadline for completing a request for the Grade 8 Transfer Period is **February 18, 2022**. If you do not register by the online registration deadline, you will need to complete a request under the *Enrolment Requests – New; Transfer; Withdraw (2022/2023)* school year.

PLACEMENT NOTIFICATION

5



Parents will be notified by email before spring break about their child's assigned school.

TRANSFERS AFTER DEADLINE

6



Movement between schools after the school placements have been finalized will require a transfer request submitted on the *Parent Portal* under the *Enrolment Requests-New; Transfer; Withdraw (2022/2023)* school year.



The ability to transfer will be limited by building space and available staffing. See Student Transfer Guidelines.



A review of transfer requests will be completed before the Grade 7 orientation date in May. Individual meetings and/or visits will occur after placement.

MESSAGES FROM OUR PAC

Did you know we have a PAC section on our School Website? For information on the PAC, access to PAC meeting minutes and much more please check our Maple Ridge School District Website by visiting: <https://elementary.sd42.ca/mapleridge/>

Our PAC also has a Facebook group which you can follow. Search for: **Maple Ridge Elementary PAC** on Facebook

Our Next PAC Meeting is January 10th at 7:00 pm on Zoom.

All parents and guardians are welcome. We look forward to seeing you there!

Use the following Zoom Link: Meeting ID: 817 2367 8481

Passcode: 499270

Volunteers Needed

The PAC needs you! We are looking for parents who would be interested in helping coordinate a French Book Fair in the Spring of 2022.

If you are interested in volunteering your time, please email: pac.mre@gmail.com

Current Fundraisers

We have several exciting fundraisers taking place at Maple Ridge Elementary right now. Fundraisers are a great way to support our school. See the list below:

Maple Ridge Liquor Store

Did you know that when you make a purchase at the Maple Ridge Liquor Store and mention MRE, they will make a 5% donation to our school?

Save On Foods Receipts

We are once again collecting Save-On-Foods receipts. Students can use the drop-off box near the office. After we have collected a certain number of receipts Save On Foods provides our school with gift cards.

UPCOMING DATES

Monday January 3, 2022

Welcome Back to School After Winter Break

January 10

PAC Meeting 7:00 pm

January 24

Non-Instructional Day – Classes Not In Session



Coronavirus disease (COVID-19)

Mandatory Requirements FOR UNVACCINATED CHILDREN UNDER 12 YEARS arriving in Canada without COVID-19 symptoms and TRAVELLING WITH FULLY VACCINATED PARENTS OR GUARDIANS



The Government of Canada has put in place emergency measures under the Quarantine Act to slow the introduction and spread of COVID-19 and variants in Canada. Symptoms can take up to 14 days to develop and the virus can be transmitted to others. To help keep others safe, you must meet the requirements under the *Minimizing the Risk of Exposure to COVID-19 in Canada Order (Quarantine, Isolation and Other Obligations)*.

Unvaccinated CHILDREN LESS THAN 12 YEARS OF AGE who enter Canada with their fully vaccinated parents, step-parents, guardians or tutors, are not required to quarantine upon entering Canada if both the child and the parents, step-parents, guardians or tutors, meet certain requirements in the Order and comply with the conditions imposed on them by the Minister of Health.

Public Health Measures

You must follow the public health measures listed below which set out the requirements under the Order and conditions imposed by the Minister of Health for your child and monitor their symptoms carefully for their own health and the safety of others.

These measures apply only if the child does not develop symptoms, is not exposed to anyone with COVID-19 symptoms, or test positive for COVID-19. Provincial and territorial measures are guided by local epidemiology and local circumstances may require stricter measures. If your local jurisdiction requires additional measures, these must be followed.

For the next 14 days You MUST:



LIMIT CONTACT WITH OTHERS

- Stay in an acceptable place that allows the child to avoid all contact with persons who meet the following conditions:
 - has an underlying medical condition that makes the person susceptible to complications related to COVID-19;
 - has a compromised immune system from a medical condition or treatment; or
 - is 65 years of age or older.
- Make sure the child remains with their fully vaccinated parent and/or guardian, as much as possible.
- Make sure the child enters public settings only in accordance with the instructions below, and wears a well-constructed, well-fitting mask to minimize the risk of introducing or spreading COVID-19.



TAKE COVID-19 TESTS

- Have the child take COVID-19 molecular tests as instructed (see separate handout for instructions), unless you have evidence that the child had a positive COVID-19 test taken 14 – 180 days prior to arrival in Canada OR the child is under 5 years of age.
 - Should the child develop signs or symptoms or test positive, isolate them immediately, call the local public health authority, and follow their instructions.
- Keep a copy of travel-related COVID-19 molecular test results for the next 14 days.
- Upon request, provide the child's test results to the Government of Canada or government of the province or territory where you are staying or residing, or to the local public health authority.



REPORT AND MONITOR

- Monitor the child's health.
- Maintain a list of names and contacts with whom the child came into close contact during the 14-day period.
- For the next 14 days after entry to Canada if the child develops sign or symptoms or tests positive for COVID-19, you must:
 - Report it immediately to PHAC by calling 1-833-641-0343, and
 - Follow all local public health requirements, including quarantine or isolation.



WARNING: Your compliance with this Order is subject to monitoring, verification and enforcement. If you or your child do not comply, your child may not be exempted from quarantine. You and your child may also be transferred to a quarantine facility, face fines, tickets, and/or imprisonment.

Symptoms

Should any of the following symptoms appear, or the child receive a positive result for a COVID-19 molecular test before the expiry of the 14-day period that begins upon entry into Canada, immediately isolate the child away from others and call your local public health unit for further instructions.

- › new or worsening cough
- › shortness of breath/difficulty breathing
- › muscle or body aches, fatigue, weakness
- › feeling very unwell
- › new loss of smell or taste
- › feeling feverish, chills, or temperature equal to or over 38°C
- › skin changes or rashes
- › headaches
- › gastrointestinal symptoms like abdominal pain, diarrhea, or vomiting

What your child CANNOT DO for the next 14 days

- › Attend a setting where they may have contact with vulnerable people (e.g. long term care facility), including with people who are immune compromised, regardless of that person's vaccination status or public health measures in place.
- › Attend school, camp or day care.
- › Travel on crowded public transportation that does not ensure physical distancing and masking (e.g. crowded subway).
- › Attend large crowded settings, indoors or outdoors, such as an amusement park or sporting event.

What your child CAN DO for the next 14 days

- › Visit uncrowded public settings such as parks, beaches or going for a walk while wearing a mask unless physical distancing can be maintained.
- › Gather on your own property with people from multiple households provided the child wears a mask and maintains physical distance.
- › Take uncrowded public transportation such as a taxi, or rideshare provided masks are worn at all times.
- › Gather with a small group of people from outside the household who are all known to be fully vaccinated while your child wears a mask and maintains physical distancing.
- › Accompany you to essential settings such as a grocery store or pharmacy, provided the child wears a mask and maintains physical distancing.

Public health authorities

Provinces and territories	Telephone number	Website
British Columbia	811	www.bccdc.ca/covid19
Alberta	811	www.myhealth.alberta.ca
Saskatchewan	811	www.saskhealthauthority.ca
Manitoba	1-866-626-4862	https://manitoba.ca/covid19/estartmb/
Ontario	1-866-797-0000	www.ontario.ca/coronavirus
Quebec	1-877-644-4545	www.quebec.ca/en/coronavirus
New Brunswick	811	www.gnb.ca/publichealth
Nova Scotia	811	www.novascotia.ca/coronavirus
Prince Edward Island	811	www.princeedwardisland.ca/covid19
Newfoundland and Labrador	811 or 1-888-709-2929	www.gov.nl.ca/covid-19
Nunavut	1-867-975-5772	www.gov.nu.ca/health
Northwest Territories	811	www.gov.nt.ca/covid-19
Yukon	811	www.yukon.ca/covid-19



DAILY HEALTH CHECK

KEY SYMPTOMS OF ILLNESS	WHAT TO DO
Fever (above 38°C)	If yes to 1 or more of these symptoms: Stay home. Contact a health care provider or call 8-1-1 about your symptoms and next steps.
Chills	
Cough	
Difficulty breathing	
Loss of sense of smell or taste	
OTHER SYMPTOMS	WHAT TO DO
Sore throat	If yes to 1 symptom: Stay home until you feel better.
Loss of appetite	
Headache	If yes to 2 or more of these symptoms: Stay home for 24 hours. If symptoms don't get better or get worse, contact a health care provider or call 8-1-1 about your symptoms and next steps.
Body aches	
Extreme fatigue or tiredness	
Nausea or vomiting	
Diarrhea	
INTERNATIONAL TRAVEL:	WHAT TO DO
Have you returned from travel outside Canada in the last 14 days?	If yes: Fully vaccinated students, staff and other adults who have travelled outside of Canada may qualify for the fully vaccinated traveller exemption . Students, staff and other adults who are not fully vaccinated and have travelled outside of Canada CANNOT attend school for 14 days after arrival , as part of federal requirements .
CLOSE CONTACT	WHAT TO DO
Have you been notified by public health that you are a close contact of a person confirmed to have COVID-19?	If yes: Follow the instructions provided by Public Health.

You can also check your symptoms with the [K-12 Health Check](#) or the [BC Self-Assessment Tool](#).

Call 8-1-1 with any questions about symptoms of illness. If you have severe symptoms, like difficulty breathing (struggling to breathe or you can only speak single words) or chest pain, call 9-1-1 or go to the nearest Emergency Department.

Visit the [BC Centre for Disease Control website](#) for more information on COVID-19.



2022 Fraser Valley Regional Science Fair

April 6-9, 2022

Envision Athletic Centre, University of the Fraser Valley

November 22, 2021

Attention all Science enthusiasts – *the Science Fair is back!*

The Fraser Valley Regional Science Fair (FVRSF) is an exciting opportunity for students in Grades K-12 to engage their curiosity, cultivate their inquiry skills and participate in an exciting event on campus at UFV this Spring. Our fair provides a healthy supportive environment where students get to present their research, interact with local scientists and win cash, prizes and scholarships. Every year up to nine students with the best projects from our regional fair are invited to participate in the virtual Canada-Wide Science Fair (CWSF) in May.

Our fair is organized to benefit students and build their confidence, regardless of whether they win a major prize. We hope you will consider playing a role in guiding your students towards participating in this truly unique learning opportunity. There are three main types of projects your students could do: an **experiment**, a **study** or an **Innovation/invention**. There are significant prizes for a wide variety subject areas – from Agriculture to Computer Science – so project possibilities are endless.

If your students would like to participate in our program, the online registration will be open **January 10 through to March 11, 2022**. If your school does not participate in the FVRSF program, but you know of one or more students who would be interested in entering on their own, it is possible for a parent to register as the child's coordinator. They just need to email us at the address below, and we will guide them through the process.

We are excited to announce there will again be an **early registration draw** for participants who have registered by January 31, 2022. The winner will be presented with a \$50 gift card at the FVRSF Awards Ceremony in April. Regardless of when they register, all students will be able to access their registration to update their project information until the final deadline of March 11th.

For more information and support materials, please visit our website: ufv.ca/science-fair/.

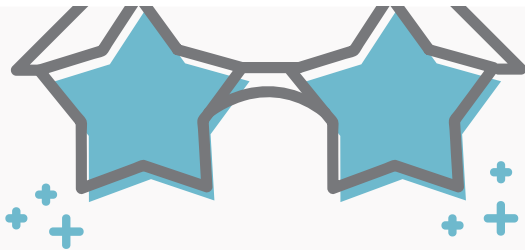
If you have questions, feel free to email us at fvrsl@ufv.ca.

Thank you so much for your dedication to engaging students in science and inquiry! You are all doing great things in schools, and your students are lucky to have your support.

Sincerely,

Dr. Ian Affleck, Regional Coordinator
Fraser Valley Regional Science Fair





WESTVIEW SECONDARY PRESENTS

WESTVIEW WINTER CONCERT

Jazz 9-12/ Beginner Band 5-7/ Advanced Band 6-7

January 19, 2022

WSS MPR

7pm

Admission by donation

