

Friday Blast

Maple Ridge Elementary

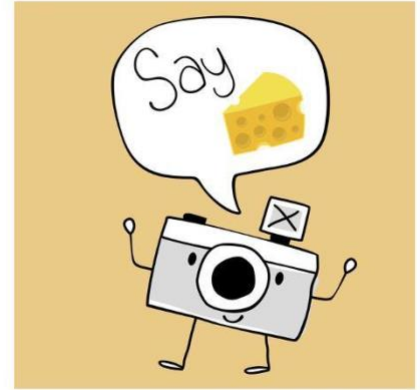
Friday, November 5th 2021

SCARE HUNGER DONATIONS

Thank you to everyone who donated to the Scare Hunger Food Drive. Our school raised a total of 195 kg or 429 pounds which was donated to the Food Bank.

SCHOOL PICTURES

Photo expressions is continuing to offer school portraits in our Port Coquitlam studio for students who did not have a chance to get photographed at school, or for whatever reason need a retake in studio.



The first available dates are Friday November 5th and Saturday November 6th. More dates will be added as necessary, into the new year. The link to book is: <https://photoexpressions.ca/portraits/booking/studio-school-portraits/>

REPORT CARD FEEDBACK SURVEY

Today is the final day to complete the report card feedback survey. This survey gives you a chance to have your say about updates to student report cards.

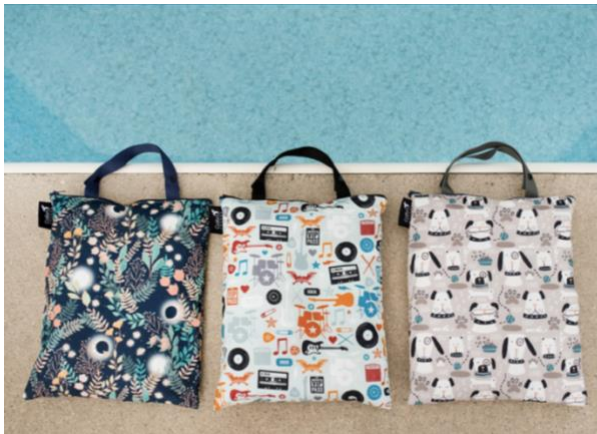
A draft K-12 Student Reporting Policy, as well as a background and rationale document, has been released. A report summarizing all feedback received will follow in December. To submit your feedback please visit: <https://engage.gov.bc.ca/govtogetherbc/consultation/studentreporting/> You can contact Ministry staff at student.reporting@gov.bc.ca with any questions.

DAILY HEALTH CHECK

Thank you for continuing to diligently monitor your child's health and completing the Daily Health Check each day prior to coming to school. The updated Daily Health Check is attached. This helps keep our school a safe and healthy place.

MASKS

Did you know that a recently conducted research project found it is likely that approximately 1.5 million face masks entered the world's oceans in 2020? This is equal to between 4,680-6,240 metric tons of marine plastic pollution. Please continue to ensure your child has a mask and a spare each day - preferably, a washable, reusable one. While we understand that from time to time you may forget, it helps not only our school but also the environment to if everyone has their own, reusable masks.



COLIBRI FUNDRAISER

Have you been looking for sustainable and reusable household items? Do you like supporting our school? Look no further than Colibri! From now until Monday November 15th you can order a variety of products such as reusable snack bags, wet bags, straws, and cleaning cloths. Visit www.colibrifundraising.com and select “Maple Ridge Elementary” at checkout to ensure your items are shipped directly to our school.

SANTA MALL

This year our school will be hosting a “Santa Mall” where students can purchase a holiday gift for a loved one. Students will have 20 minutes to shop with their class, pick a gift and have the item gift wrapped. Gifts will not be priced, and students are permitted to purchase any one gift by donation of \$1-\$5. Please do not send your child to school with more than \$5 on their Santa Mall day as change cannot be given. Santa Mall will take place on **Thursday November 25th and Friday November 26th**

Thank you to Jeanie Harmon for organizing this event for our school. The Santa Mall is in need of new items for gifting (ex. mugs, candles, perfume soaps, costume jewellery, etc...). If you have items that would be considered “dad” or “grand-pa” gifts such as golf tees/balls, sports gear, mugs, new socks, belts or gloves they would be appreciated as this is an area which often falls short. We will also accept donations of wrapping supplies such as gift wrap, bows and bags. Please note we cannot accept food, alcohol, clothes, shoes or dangerous goods such as knives, flares, lighters, etc.



If you have any questions or would like to set up a time to drop off your donation to Jeanie please email: jeanandjoshharmon@shaw.ca Donations cannot be dropped off at the school at this time.

MESSAGES FROM OUR PAC

Did you know we have a PAC section on our School Website? For information on the PAC, access to PAC meeting minutes and much more please check our Maple Ridge School District Website by visiting: <https://elementary.sd42.ca/mapleridge/>

Our PAC also has a Facebook group which you can follow. Search for: **Maple Ridge Elementary PAC** on Facebook

Our Next PAC Meeting is November 8th at 7:00 pm on Zoom.

All parents and guardians are welcome. We look forward to seeing you there!

Use the following Zoom Link:

Meeting ID: 817 2367 8481

Passcode: 499270

Volunteers Needed

The PAC needs you! We are looking for parents who would be interested in helping coordinate a French Book Fair in the Spring of 2022.

If you are interested in volunteering your time, please email: pac.mre@gmail.com

Current Fundraisers

We have several exciting fundraisers taking place at Maple Ridge Elementary right now. Fundraisers are a great way to support our school. See the list below:



Book Fair

We are excited to welcome back the In-Person Scholastic Book Fair this year! All students will have the opportunity to visit the Book Fair with their classes from November 22nd - November 24th.

If you would like your child to purchase books, please send them to school with cash in a Ziploc bag. Unfortunately, the Book Fair will not be open to parents or students after school this year.

The PAC is also very excited to announce that an Online French Book Fair will also begin on November 22nd and run for two weeks. Please stay tuned for the link to access the French Online Book Fair which will be provided closer to the date. French Immersion students will also have the opportunity to visit the In-Person Book Fair with their classes and there will be a selection of French books available at that time.

Neufeld Farms Orders

If you ordered from Neufeld Farms please mark your calendars. Order pick-up is on *Wednesday, November 10 @ 5:30 pm* at the front of the school drive through style, following Covid-19 health and safety protocols.

Purdy's Chocolates

Grade 7s will be raising funds for their yearend leaving activities through Purdy's Chocolates Sales. Online orders for Maple Ridge Elementary can be found through this link:

<https://fundraising.purdys.com/1364945-86000> Order through: Market place or Online Orders once you have created your account.

To view the digital catalogue please click:

https://fundraising.purdys.com/gnfassets/resources/web/fundraising/2021_Christmas_Fundraising_Catalogue_Digital.pdf

The deadline for orders is November 30th and the pick-up date will be December 15th. If you have questions, you can email them to:

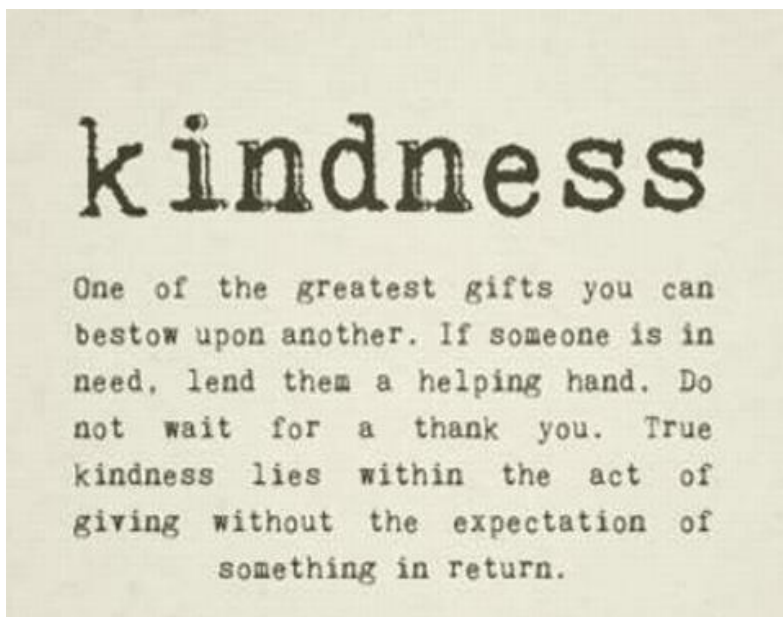
nekoalne@hotmail.com

Maple Ridge Liquor Store

Did you know that when you make a purchase at the Maple Ridge Liquor Store and mention MRE, they will make a 5% donation to our school?

Save On Foods Receipts

We are once again collecting Save-On-Foods receipts. Students can use the drop-off box near the office. After we have collected a certain number of receipts Save On Foods provides our school with gift cards.



UPCOMING DATES

Nov 8 - PAC mtg 7 pm

Nov 10 - Remembrance Day Assembly, Neufeld Delivery

Nov 11 - Remembrance Day (Classes Not In Session)

Nov 12 - Pro-D Day (Classes Not In Session)

Nov 18 - Hot Lunch: Fuel Burger Day

Nov 19 – Nov 24 Book Fair

Nov 19 – Reading Blast

Nov 23 – Fruit and Veggie Program Delivery: Pears

Nov 26 - Hot lunch (Subway)

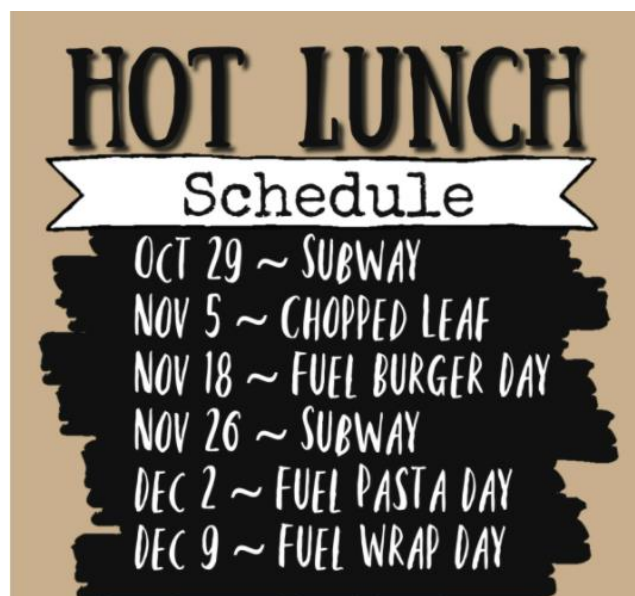
Dec 1 – Fuel Pasta Day (date changed due to Student Led Conferences)

Dec 2 - 11:30 am dismissal – Student Led Conferences

Dec 3 – Student Led Conferences All Day (classes not in session)

Dec 7 – Fruit and Veggie Program Delivery: Mandarin oranges

Dec 9 – Fuel Wrap Day, Reading Blast



DAILY HEALTH CHECK

KEY SYMPTOMS OF ILLNESS	WHAT TO DO
Fever (above 38°C)	If yes to 1 or more of these symptoms: Stay home. Contact a health care provider or call 8-1-1 about your symptoms and next steps.
Chills	
Cough	
Difficulty breathing	
Loss of sense of smell or taste	
OTHER SYMPTOMS	WHAT TO DO
Sore throat	If yes to 1 symptom: Stay home until you feel better.
Loss of appetite	
Headache	If yes to 2 or more of these symptoms: Stay home for 24 hours. If symptoms don't get better or get worse, contact a health care provider or call 8-1-1 about your symptoms and next steps.
Body aches	
Extreme fatigue or tiredness	
Nausea or vomiting	
Diarrhea	
INTERNATIONAL TRAVEL:	WHAT TO DO
Have you returned from travel outside Canada in the last 14 days?	If yes: Fully vaccinated students, staff and other adults who have travelled outside of Canada may qualify for the fully vaccinated traveller exemption . Students, staff and other adults who are not fully vaccinated and have travelled outside of Canada CANNOT attend school for 14 days after arrival , as part of federal requirements .
CLOSE CONTACT	WHAT TO DO
Have you been notified by public health that you are a close contact of a person confirmed to have COVID-19?	If yes: Follow the instructions provided by Public Health.

You can also check your symptoms with the [K-12 Health Check](#) or the [BC Self-Assessment Tool](#).

Call 8-1-1 with any questions about symptoms of illness. If you have severe symptoms, like difficulty breathing (struggling to breathe or you can only speak single words) or chest pain, call 9-1-1 or go to the nearest Emergency Department.

Visit the [BC Centre for Disease Control website](#) for more information on COVID-19.