

Week at a Glance

Nov. 25-Nov. 29, 2024



Monday, November 25

Div. 6 and 11 skating
Girls basketball practice 230-4

Tuesday, November 26

Boys' Basketball practice 7-8am

Wednesday, November 27

Firefighter presentation grades ½
Girls practice 230-4

Thursday, November 28

Boys' Basketball practice 7-8am

Friday, November 29

PAC lunch Pizza 64

More Important News

Conferences

Early Dismissal Dec. 5 @ 11:30

No school all day Dec. 6

Please sign up for a conference with your child's teacher through the portal. This is an important event for your child. It is an

18961 Advent Rd, Pitt Meadows, BC V3Y 2G4

(604) 465-6737

Highland Park Elementary School

Nov. 30

Freecycle 11-2 in the gym

Dec. 2

Book fair begins

Dec. 3

Grade 6 Immunizations

Dec. 5 Conferences 1130 dismissal

Dec. 6 -Conferences

PAC Winter Market
Bookfair open in evening

Dec. 12

Giving Tree donations due

Dec. 13

PAC lunch Boston Pizza

Dec. 18

Winter concert 9am and
1pm

Dec. 19

Div 4, 5, 8 to movie

Dec. 20

PAC LUNCH FOR ALL

Dec. 21-Jan 5 Winter Break

Happy New Year

Jan. 6

Back to school

opportunity for them to share their learning and to set goals for the next term. Research indicates that one of the reasons your child will continue to do well is the interest you take in their learning. The dialogue that you enter into with the student and the teacher at this conference and the relationships that are built through this process are invaluable.

If you are unable to attend during the times offered, please reach out to your child's teacher

Winter Concert

Mark your calendars...our Winter music concert is Dec. 18 at **9am and 1pm**. Doors will open at 845 and 1245.

Giving Tree

Our giving tree is up and ready. Once we have received our families that we are supporting, we will hang ornaments with their wishes on them. I will let you know once we have wishes up on the tree.

Lost and Found

All remaining items will be donated to the FreeCycle on the weekend. Lots of items have been claimed but the hanging rack is still full.

Clothing Free-Cycle, Nov. 30, 11am-2pm

Thank you for all the donations so far. We are accepting donations until Nov. 29. Everyone is invited to come thrift on Nov. 30.



Highland Park SECOND ANNUAL FREECYCLE

Call For Donations !!

Join us in making a difference!

Ways to Contribute:

1. We are accepting clean, gently used kids and teen clothing, outerwear shoes and boots. Sports clothing and non-perishable foods also accepted.
2. Donations can be brought to the office. Make sure clothing is clean with no holes.

Located at : 18961 Advent Road Pitt Meadows

**JOIN US IN MAKING A POSITIVE IMPACT: DONATE TODAY!
ACCEPTING DONATIONS UNTIL NOVEMBER 29, 2024.**



**FREECYCLE event will take place Saturday, November 30, 2024
from 11am - 2 pm OPEN TO THE PUBLIC**

(604) 465-6737



HIGHLAND PARK FREECYCLE EVENT



Saturday, November 30, 2024

11am - 2pm

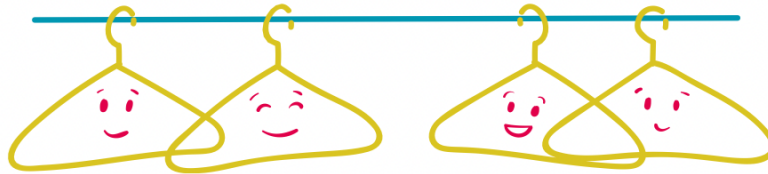
- OPEN TO THE PUBLIC -

Located at : 18961 Advent Road Pitt Meadows

Please join us for a free shopping event.

We have gently used kids & teen
clothing, outerwear & shoes.

BRING YOUR OWN SHOPPING BAG.

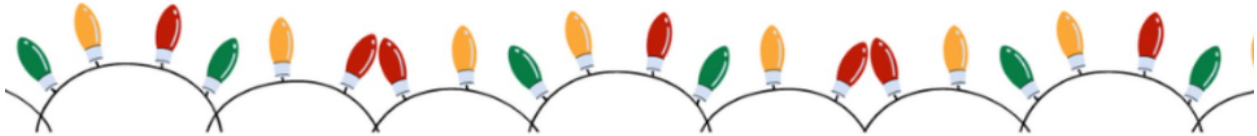


Good for the world and the wardrobe!



Highland Park Holiday Market

December 6, 2024 | Friday | 5pm-8pm
18961 Advent Rd, Pitt Meadows



Highland Park Elementary PAC is excited to announce that we will be hosting the Highland Park Holiday Market, a night of shopping and community building! We will have 28 businesses plus a special "kidpreneur" market made up of some of our most enterprising students! Get your holiday shopping done while supporting your community school!

Entrance fee is by donation and will be going towards the school Christmas Hampers.

WHEN:

December 6th 2024 | Friday | 5pm-8pm at the HPE
Gym Pitt Meadows

If you have any questions, please email
highlandpark.lunch@gmail.com

Pre-Registration Now Available

www.helpportraitridgemeadows.com/register



HELP-PORTRAITTM RIDGE MEADOWS

FREE PHOTOGRAPH FOR ANYONE IN NEED!

An opportunity for people that have...

To help people that don't

Sunday, December 8, 2024 1PM to 7PM

GOLDEN EARS UNITED CHURCH

22165 Dewdney Trunk Rd • Maple Ridge

pre-registration now available

THIS IS HOW IT WORKS

1. ARE YOU SOMEONE IN NEED?
2. WE PROFESSIONALLY TAKE YOUR PORTRAIT
3. WE PRINT YOUR PORTRAIT
4. AND DELIVER IT TO YOU

WHO CAN BENEFIT

- A NEIGHBOUR
- THE HOMELESS
- THE OUT OF WORK
- A SINGLE MOM/DAD & KIDS
- THE SICK
- THE LONELY
- UNDERPRIVILEGED
- FAMILIES

A SHIFT IN THINKING ABOUT PHOTOGRAPHY

SPONSORED BY:



TO DONATE, REGISTER OR VOLUNTEER

www.helpportraitridgemeadows.com

Information night: Are you interested in hosting an international student?

Are you interested in welcoming an international student into your home? Join us for an online information session on **Thursday, November 14, 2024, at 7 p.m.** Call 604.466.6555 Ext. 3 or email inted@sd42.ca to register.

Hosting an international student allows you and your family to experience new cultures and connections while making a significant difference in a student's life. Host families are a valuable part of the Maple Ridge – Pitt Meadows International Education program and provide our students with support to help them adjust to living away from home. This support helps students have a positive experience both academically and out of school.

Whether you have hosted in the past or are new to the experience, we have varying program lengths, allowing you to choose which works best for your family.

Learn more at <https://inted.sd42.ca/host-a-student/hosting-information/>.

Maple Ridge Youth Strategy Survey

This survey has been created to help better understand how the community of Maple Ridge can better support youth needs. We appreciate you taking the time to complete this anonymous survey. The purpose of the Youth Strategy is to help youth understand their place and value in the community. And to help service providers, parents, caregivers, youth and the community at large to work with and support youth (12-18) and emerging adults (19-24) to promote positive physical, social, and emotional outcomes.

[Maple Ridge Youth Strategy Survey \(surveymonkey.com\)](https://www.surveymonkey.com)

SD42 Accessibility Survey

Maple Ridge – Pitt Meadows School District No. 42 is inviting feedback from students, staff, and families on accessibility barriers in the district. These barriers can range from access to a school program, building, or school information, to the ability to receive a needed service or support. Provide feedback at <https://www.surveymonkey.com/r/SD42access>