



# Garibaldi Secondary School Newsletter

**Sept 2021**

**[https://  
gss.sd42.  
ca/](https://gss.sd42.ca/)**

## **A Welcome Message.**

I hope you are enjoying your summer and looking forward to school start-up. This has been another significant summer.

Our main communication platform is the school website. Please find it at [gss.sd42.ca](https://gss.sd42.ca) and make this your first point of contact with the school. The GAZETTE can be viewed on the main page and is updated daily. All teacher email addresses, and additional school contact information is posted. We take pride in updating the website frequently take great pride in its accuracy.

This year will be a year of adjustments. It's important to recognize many students have not been in a "normal secondary experience" for 18 months. Our school is growing in capacity and diversity.

I'm honoured to work with the school community offers the first quality education experience. Our 2021 graduates have progressed to schools around the world to pursue wide ranging goals. Our graduation rate will be one of the highest in the province.

Please make sure you connect meaningfully with your son or daughter asking good questions about each class every day. Good things are happening here. The School Calendar and Bell Schedule can be found at:  
[GSS 21-22 Calendar](#)  
[GSS 21-22 Bell Schedule](#)

Respectfully,

Ian Liversidge

## **Sept - Nov 2021 Dates**

**Sept 21 Collab Day - Early  
Dismissal**

**Sept 22 School Photos**

**Sept 30 National Day for Truth and  
Reconciliation - No School**

**Oct 1 Pro D Day - No Students**

**Oct 11 Thanksgiving Holiday**

**Oct 14 Collaboration - Late Start**

**Oct 15 Photo Retakes**

**Oct 20 Student Led Conferences -  
Format yet to be determined**

**Oct 22 Pro D Day**

**Oct 27 Collab Day - Early**

**Dismissal**

**Oct 27 School Band Concert at St.  
Georges Church**

**Nov 1 - 5 Provincial Assessment Week**

**Nov 10 Remembrance Day**

**Assemblies**

**Nov 11 Remembrance Day holiday**

**Nov 12 Pro D Day**

**Nov 15 E Reports Issued**

**Nov 16 - 19 Grad Photos**

**Nov 22 Collab Day - Early**

**Dismissal**

**Nov 23 Legally Blonde - School**



**GSS Newsletter**

**Fall 2021**



## About School Health:

School District 42 is compliant with the BC Ministry of Education Guidelines. Significant documents are posted to both the school district and Ministry of Education website.

Here are a few key links:

[BC Ministry Health Check](#)

[Fraser Health - About Schools](#)

[SD42.ca coronavirus response](#)

[SD42.ca communicable diseases prevention](#)

## Key elements in the School District Health and Safety Overview

Screening and when to stay home: Parents/guardians will be required to do a daily health assessment of their child(ren) every morning using <https://www.k12dailycheck.gov.bc.ca/healthcheck?execution=e1s1> sending their child(ren) to school. Students who have any symptoms of illness must not attend school. District staff will need to perform this same daily assessment and will also be required to stay home should they have any symptoms of illness.

## Keeping a safe distance from other Secondary students

In a learning group, students do not need to stay two metres apart, but should limit personal contact. Classrooms will be configured to allow for distance between students and adults as needed. Physical distancing will also be supported through: the staggering of school start times, dismissal times, and lunch breaks; through separate dedicated entrances, exits, and eating areas; and through entry and exit procedures with learning groups using assigned doors, washrooms, and classroom spaces. To support this goal, hallways are often uni-directional.

## Getting to class and supporting less crowded hallways

For the 2021- 2022 academic year, we have reduced the number of bells in the school day. We have encouraged teachers to have a small degree of flexibility extending the transition times a few minutes. We will continue ask students to not group or congregate inside or outside. We encourage students to enter through the door that accesses their classroom the most immediately.

## School Lockers

Lockers have been assigned for the 2021 - 2022 school year. We have asked students only to take a locker if necessary. This was one to support reduced congestion in the hall during class changes. Students have been supportive of this initiative.

## Wearing a mask and/or face covering

Masks are required at all time and are mandatory for all staff.

More info about masks can be found at: <https://www2.gov.bc.ca/gov/content/education-training/k-12/covid-19-safe-schools#daily-health-checks>



## DAILY HEALTH CHECK



- ▶ Parents/guardians must assess their child daily for symptoms of illness. Children who show symptoms of illness must stay home.
- ▶ Staff must self-assess daily and stay home should they have any symptoms of illness.

## Best Practices In 2021

The challenges for the pandemic have created a new planning and school preparation practices. Students should be sure to:

- have a few masks, regularly cleaned, never shared, stored in a clean zip lock, not in the bottom of a school bag.
- Bring their own water bottle, and utensils for lunch.
- Pack in and pack out lunch waste. We should all reduce and reuse before we recycle.
- Ensure that they have their own school supplies for each subject. Sharing supplies cannot be supported and teachers cannot supply the “big bin” of crayons etc anymore.
- Students are encouraged to bring their own disinfecting wipes to clean items such as keyboards.

## Ventilation and enhanced cleaning and disinfection routines

Ventilation systems in all school district facilities will meet WorkSafeBC requirements, and all air filters will be replaced on a regular basis. All schools will be cleaned in accordance with the Provincial COVID-19 Health & Safety Guidelines for K-12 Settings. General cleaning (including single-use surfaces like student desks) will occur once every 24 hours.

## Daily Self Assessment

Everyone entering the school environment is expected to do a Daily Health Assessment. This is a personal review of the signs and symptoms of Covid - 19. It is not necessary to print or submit. Please review the form in the attached link: [BC Ministry Health Check](#)

**What if you feel ill?** The BCCDC guidelines for schools are firm. If a student, staff member or any other adult has any symptoms of a cold, influenza, COVID-19, or any other infectious respiratory

Open the Mac App Store to buy and download apps.



### My School Day 4+

Honeygarlic Software Ltd

Designed for iPad

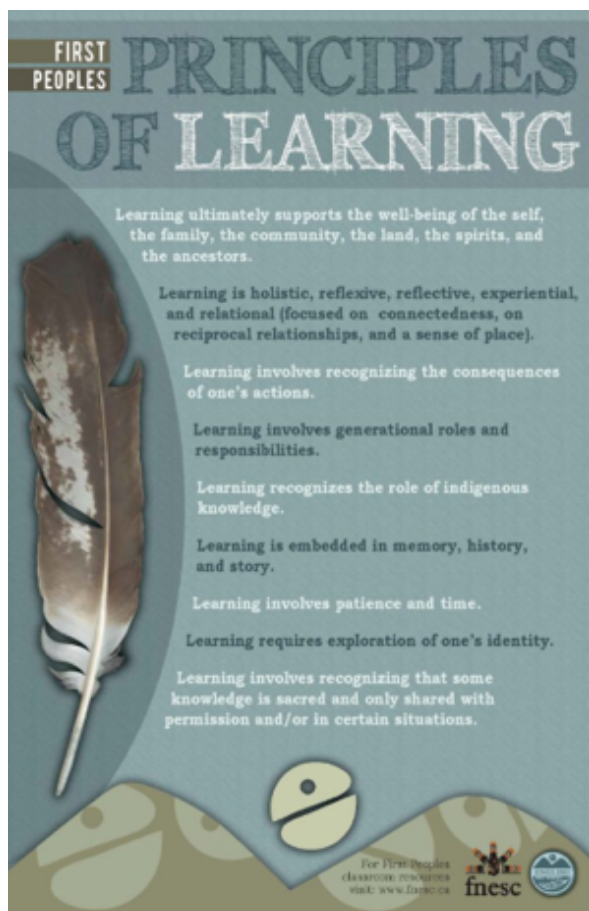
★ ★ ★ ★ 1.0 • 1 Rating

Free

[View in Mac App Store ↗](#)

**School Planner** Garibaldi Secondary uses a school planning tool called My School Day. This is the 2021 version of the school planner. It is a digital planner. It is recommended that parents also download the App as this gives the school the ability to send direct notifications. We have found this useful in situations such as snow days, power outages, as well as positive school cultural events. The App can be found at: <https://myschoolday.app/download> or in the App Store or Google Play. Generic paper planners can be purchased at the Rebel Mart.





**First Peoples Principles of Learning.** In the last decade, the British Columbia Ministry of Education has indicated an increasing commitment to including the First Peoples (or Aboriginal) perspectives of teaching and learning in British Columbia schools (British Columbia Ministry of Education, 2013-2014). Initial integration of First Peoples' content into various curricula was initially intended to support the success of Aboriginal learners; however the principles that govern traditional First Peoples' perspectives of teaching and learning have gained a more prominent place in the BC education system as educators are recognizing that they promote educational practice that is also effective for non-Aboriginal learners.

From: <https://firstpeoplesprinciplesoflearning.wordpress.com/>

## Collaboration Days

Collaboration days allow teachers to meet, and collaborate in support of students and improved teacher planning. For the 2021 - 2022 academic year these collaborations sessions will create early dismissals for students. While students can remain in the building, teachers and EA's are otherwise engaged.



# PLEASE SIGN IN & OUT HERE

**Students sign out, and sign in.** If a student arrives after 9 am they are expected to sign in at the office. A sign-in book is located outside the main office.

Students leaving early for the day do so with parent permission. Typically a prior phone message, portal message or parent note is supplied. Text messages are not accepted as parent permission.

**Communication Gazette , Parent Portal.** The Parent Portal is a SD 42 developed software that supports parental permissions, field trips and credit card payments. It is an important communication platform that we use



in many situations. Please ensure that you are connected. In the event you are not receiving notifications through the Parent Portal please contact our Admin Coordinator Ms. Montgomery at: [Jacqueline Montgomery](mailto:Jacqueline.Montgomery@sd42.ca) [Jacqueline.Montgomery@sd42.ca](mailto:Jacqueline.Montgomery@sd42.ca) and ask for a "Linking Letter".

Maintaining contact with parents and students is important to us. We rely upon email, the parent portal, Facebook, Twitter and the planner app to keep families abreast of what's going on. You can follow us on Facebook or Twitter. The Gazette on the school website is updated daily. If you haven't been receiving emails this year, you'll need to resubscribe. We strongly encourage parents to do this by logging onto the parent portal and subscribing on the login page.

**A Student fees** notification was sent the first week of school. Student fees are used to support non curricular student activities. The elements of a school community that bring us connection and greater community. Elements that are more important than ever. Although we can take cash payments at the main office, **online payment with the parent portal is preferred.**



## Parent Advisory Committee

The BC School Act gives parents the right to belong to a parent advisory council (PAC) in their school, and through it to advise the board, principal, and staff on any matter relating to the school. It is a place for positive communication and an effective place to learn about the school and school community. Meetings are open for all parents to attend. Past minutes, agendas and upcoming meeting dates are posted to: <https://secondary.sd42.ca/gss/parent-advisory-council/>

**Parent Access** to the school is by appointment only, as per guidelines established in support of reducing contacts in school. Please use staff email to book appointments.

**Fall 2021**



**New Grade 8 School Email Login** In an effort to assist the current grade 8 students (staying in district) with a smoother transition to grade 8, the MyEd team has reset all of their MyClass passwords (elementary students don't use MyClass password). Incoming grade 8 students have been emailed the link to the MyClass login page, along with the user name and newly generated password student#@me.sd42.ca email account.

Access to the district student email accounts is important. Every Grade 8 is encouraged to log in to MyClass on Friday, September 4<sup>th</sup> (after 3:00pm) when we re-enable all of their accounts.

**Attendance Notification:** If your student is ill or if you are planning a holiday, attendance notification can be added to the parent portal. Failing that, you can contact the office. <https://parents.sd42.ca/Parents/ParentLoginPage.aspx>

Absence reports are collected every morning and added to the daily attendance data. Once the absence is recorded by the office, all the teachers will see the "excused absence".

Grade 12 attendance matters. Excessive absences can interfere with participation in the graduation ceremonies. Every school in the district maintains guidelines that limits absences to the equivalent of 15 days per year or 60 periods. Students who exceed this limit may not be allowed to participate in the grad ceremony.

In school, vacations are a great challenge in the semestersystem. Missing a week is equivalent to missing a month in the linear (year long courses). Teachers cannot be expected to offer separate learning accommodations for a student who chooses to miss an extraordinary time. Please look to support positive choices around schooling at this difficult and atypical time.

**MicroSoft Teams** will be the primary software for the digital learning support. In the first section of the school year, we will be working to ensure every student is logged in and proficient with this tool. We know that in the spring of 2020 there was too much diversity in digital platform delivery. We also recognize that MS Teams has limitations, however, it will form the backbone of digital delivery. Teachers are welcome to use other tools as necessary for the needs of their specific course and curriculum.

**GSS Counsellors** are still here and happy to assist you. There will be a different process for accessing counsellors than in previous years to ensure the health and safety of all. Walk-ins to the Career Counselling Centre will no longer be accepted. Appointments can be books during the process outlined at the counselling office.

Lindsey Hine (Gd 9/11/12)  
Academic)

Rani Parmar (Gd 8/10/12)

Pauline Lemieux (Gd 12)

Take a look at our websites for links to resources:

<https://gss.sd42.libguides.com/c.php?g=715795&p=5103795>

<https://gsscareercentre.wordpress.com/>

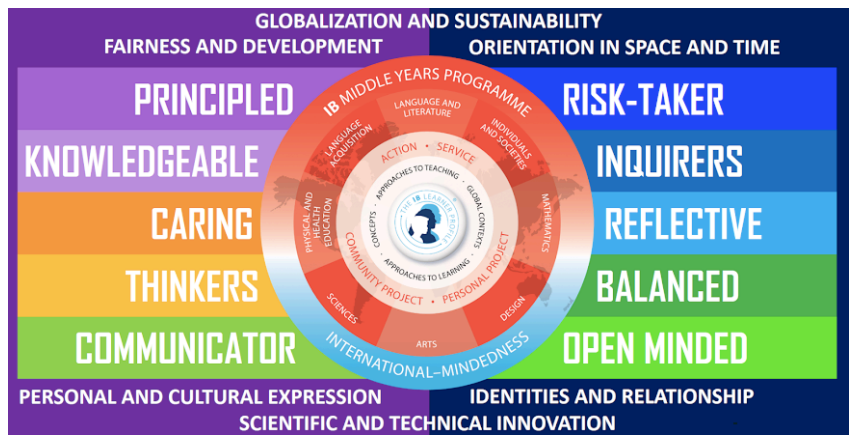
**Student Information Update.** Please log in to MyClass to view the PDF "BC Student Information Verification Form" showing on the front page under "Published Reports".

**This document contains the information we currently have on file for your student, including Parent Contacts, Emergency Contacts, any medical information, etc. If any of this information is incorrect, please print the form, handwrite the changes and sign and date the form. Please return the corrected, signed form to the school office so that changes can be made to your student's record.**

Here is the link to the MyClass Information Page: <https://myedbc.sd42.ca/MyClass> If you have any questions, or wish a printed hard copy, please feel free to contact: [gssreception@sd42.ca](mailto:gssreception@sd42.ca)



**IB Middle Year Programme.** Garibaldi is continuing with our growth in the MYP programme specifically for grade 8 - 10 students. The MYP is an internationally recognized program for ALL students entering grade 8 in September 2019. The Middle Years Programme is an INCLUSIVE, WHOLE SCHOOL programme that is offered to more than 1 million students in over 3,700 schools in 147 countries. The Middle Years Programme focuses on developing critical, creative, and reflective thinkers within a global perspective. It encourages students to make connections between their studies and the real world. The new provincial curriculum for grades 8 and 9 is being fully aligned with the IB Middle Years Programme. The new curriculum places emphasis on student inquiry, big ideas, competencies, and global awareness, which is all part of the IB Middle Years Programme.



## Yearbooks

will be sold in a separate Portal Message. Complete the online form for \$55. This year's Yearbook will be one that you truly want to have.



## Attendance Notification:

If your student is ill or if you are planning a holiday, attendance notification can be added to the parent portal. Failing that, you can contact the office directly; not individual teachers.

<https://parents.sd42.ca/Parents/ParentLoginPage.aspx>

Absence reports are collected every morning and added to the daily attendee data. Once the absence is recorded by the office, all the teacher will see the "excused absence".

## Grade 12 Attendance Matters...:

Excessive absences can interfere with participation in the graduation ceremonies. Every school in the district maintains guidelines that limit absences to the equivalent of 15 days per year. Students who exceed this limit may not be allowed to participate in the grad ceremony. If you have any questions or want to review your students attendance records, please contact the office.





## Inclement Weather:

The decision whether or not to close schools due to inclement weather conditions is the responsibility of the Superintendent who must balance safety with the need to provide learning. The Superintendent will use their best judgement to make a school closure decision. The decision making process is complicated by the fact that weather conditions can vary significantly between neighbouring communities, may change and may differ from original forecasts. A final decision is made by 6:00am so that a timely communications process can be initiated. The decision is posted on the district website <https://www.sd42.ca> and sent to major radio and television outlets such as All News

**SCHOOL SAFETY NOTIFICATION SYSTEM**  
 MAPLE RIDGE - PITT MEADOWS SCHOOL DISTRICT NO. 42

Maple Ridge - Pitt Meadows School District No. 42 has developed a School Safety Notification System in collaboration with Ridge Meadows RCMP to keep students, staff and volunteers safe. While it is impossible to anticipate all eventualities, the notifications below are used as a guide to conduct these procedures effectively.

<div style="background-color: #f96; padding: 5px; text-align: center; margin-bottom: 10px;"> <b>DROP, COVER, AND HOLD</b> </div> <p>Used in the event of an earthquake, explosion, or any event that shakes the school.</p> <ul style="list-style-type: none"> <li>Quickly move away from obvious hazards</li> <li><b>DROP</b> - low to the ground</li> <li><b>COVER</b> - take cover under a sturdy table, desks, furniture, or other large sturdy items</li> <li><b>HOLD ON</b> - to the furniture you are under and stay there until the shaking stops</li> <li>Once shaking stops, wait 60 seconds and then evacuate via the shortest safe route</li> <li>Assemble outside at the designated assembly site</li> </ul>	<div style="background-color: #92d050; padding: 5px; text-align: center; margin-bottom: 10px;"> <b>LOCKDOWN</b> </div> <p>Used to prevent intruders from entering occupied areas of the school, or in times when it is necessary to isolate students and staff from a danger outside or within the building.</p> <ul style="list-style-type: none"> <li>Principal/designate will announce "lockdown now," repeating several times</li> <li>Principal/designate will call 911 and the District Education Office (604.463.4200) - only when it is safe to do so</li> <li>Students and staff gather in the nearest secure room</li> <li>Close and secure doors</li> <li>Turn off lights, close windows and blinds, get down behind heavy furniture or out of sight, stay quiet</li> <li>All students must turn off cellphones</li> <li>Do not respond to anyone at the door, and ignore dismissal bells</li> <li>Remain in lockdown until the room is cleared by authorities</li> </ul>
<div style="background-color: #f96; padding: 5px; text-align: center; margin-bottom: 10px;"> <b>HOLD AND SECURE</b> </div> <p>Used when there is a security concern, such as a police incident, in the neighbourhood of the school.</p> <ul style="list-style-type: none"> <li>Principal/designate to announce "hold and secure," repeating several times</li> <li>Principal/designate to call District Education Office (604.463.4200) to inform of Hold and Secure</li> <li>Lock exterior doors and exterior window blinds, minimize activity in hallway</li> <li>Put sign on front door advising visitors that school is in a Hold and Secure</li> <li>Normal duties may continue within the school</li> <li>Hold and secure will be lifted by an announcement from the principal/designate under direction of RCMP</li> </ul>	<div style="background-color: #92d050; padding: 5px; text-align: center; margin-bottom: 10px;"> <b>SHELTER IN PLACE</b> </div> <p>Used as a short-term measure to protect students and staff from potential dangers outside the school (e.g. environmental weather-related emergencies, dangerous wild animals on school grounds, or a missing child).</p> <ul style="list-style-type: none"> <li>Bring everyone into school and remain indoors</li> <li>Secure exterior doors and windows</li> <li>Close exterior window blinds (if available)</li> <li>Turn off all ventilation systems (if available/appropriate)</li> <li>Staff designates will monitor access to school via main entrance</li> <li>Access may be denied if a risk exists that jeopardizes safety of occupants</li> </ul>
<div style="background-color: #f96; padding: 5px; text-align: center; margin-bottom: 10px;"> <b>EVACUATE</b> </div> <p>Used to move people out of the school when a hazard exists inside. May include floods, potential fire, or a bomb threat.</p> <ul style="list-style-type: none"> <li>Students and staff directed to exit school using the safest route</li> <li>Students and staff to assemble outside at a designated assembly site</li> </ul>	<div style="background-color: #92d050; padding: 5px; text-align: center; margin-bottom: 10px;"> <b>ROOM CLEAR</b> </div> <p>Used to move people away from a hazard contained in one room/area.</p> <ul style="list-style-type: none"> <li>Students directed to leave the room/area and report to designated area</li> <li>Principal/designate to call for assistance as needed (e.g. principal, custodian, 911, first aid attendant)</li> </ul>

**SCHOOL SAFETY NOTIFICATION SYSTEM**  
 MAPLE RIDGE - PITT MEADOWS SCHOOL DISTRICT NO. 42

## School Safety Notification System Updated 2019:

The Maple Ridge-Pitt Meadows School District has updated its *School Safety Notification System* in collaboration with the Ridge Meadows RCMP. The revised notification system follows provincial recommendations and covers the six following scenarios:

**Drop, Cover, and Hold** – Used in the event of an earthquake, explosion, or any event that shakes the school.

**Hold and Secure** – Used when there is a security concern, such as a police incident, in the neighbourhood of the school.

**Lockdown** – Used to prevent intruders from entering occupied areas of the school, or in times when it is necessary to isolate students and staff from a danger outside or within the building.

**Shelter in Place** – Used as a short-term measure to protect students and staff from potential dangers outside the school (e.g. environmental weather-related emergencies, dangerous wild animals on school grounds, or a missing child).

**Room Clear** – Used to move people away from a hazard contained in one room/area.

You can find more information about the revised *School Safety Notification System* on the district website at <https://www.sd42.ca/school-safety-notification/>



Are you interested in welcoming an International Student  
into your home and sharing the experience of being  
part of a Canadian family?

We are always looking for great host families!



**MAPLE RIDGE  
PITT MEADOWS**  
INTERNATIONAL PROGRAM

[www.inted.sd42.ca](http://www.inted.sd42.ca) @intedsd42 [www.facebook.com/IntEd.SD42](https://www.facebook.com/IntEd.SD42)

**FOR MORE INFORMATION  
PLEASE CONTACT:**

International Education  
Maple Ridge-Pitt Meadows School District  
20575 Thorne Ave., Maple Ridge,  
BC, V2X 9A6, Canada

**604-466-6555**  
<https://inted.sd42.ca/homestay>



**GSS Newsletter**

**Fall 2021**

